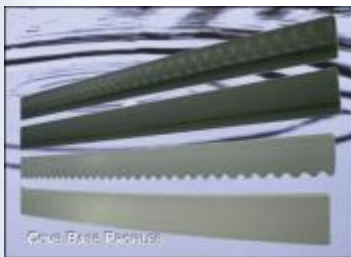


Water Trek Aqua Route®



Your “Peace of mind” Water Trek Aqua Route® system will be designed and engineered by a **Basement Technologies** Technician and installed by a fully trained **Basement Technologies** Installation Team. **Basement Technologies** has and continues to install our patented **Water Trek Aqua Route®** system in thousands of homes throughout North America.

Cove Base®



Each home and **basement** is different...and as a result **Basement Technologies** offers various **Cove Base®** designs that can accommodate your specific **basement** contour.

Basement Technologies Cove Base® is an integral part of the [Water Trek Aqua Route®](#) two-piece system. The various **Cove Base®** designs can hug a wall and channel water from the wall to the sub-floor [Water Trek Aqua Route®](#) system.

The Baseboard™



Basement Technologies recognizes to be a leader in the basement waterproofing industry one must continue to introduce new and better products as well as improve old ones.

The Baseboard Aqua Route® System was developed by **Basement Technologies** to address specialty floors with very thick, fiber reinforced, rebar or monolithically poured floors. **The Baseboard Aqua Route®** System is the perfect solution to a water problem in those specific floor configurations, as long as there are no leaking floor cracks or holes in the middle of the floor.

Fieldstone Wall Conduit™



Basement Technologies proudly introduces **The Fieldstone Conduit™** ... Innovative Solutions for Your **Fieldstone Walls**

Homeowners may consider tearing out their **fieldstone walls** due to frustrations associated with **water, mold, dirt, odors, pests** and **rodents**. In older colonial homes, it was common to dig out the basement and install stone walls. Older homes offer old world charm and craftsmanship with a high market elevation. The problem in any of these homes is the basement walls. The **basements** are usually **unsightly, wet, damp** and **moldy**.

Bell & Gossett (ITT) 1/3 1/2 3/4 Horse Power Pumps



Basement Technologies has used a variety of pumping units over the years. We have always believed a pump with heavy duty ball bearing construction and piggy backed plugs should be the choice for the customer conscious water proofing company. After extensive testing, we chose Bell & Gossett (ITT) as our primary pump.

Bell & Gossett (ITT) has been in business for over 80 years and is the premiere American made pump manufacturer in the country. They specialize in heavy duty industrial/commercial pumping units and have "downsized" some of this special technology especially for **Basement Technologies**. We have committed to **Bell & Gossett (ITT)** company our entire line of primary dewatering pumps because we are confident that our reputation is compatible with their's, and they are manufactured here in the United States. We carry three (3) primary pumps – 1/3, 1/2, and 3/4 horse power.

Crawlspace Conduit

Crawlspace Waterproofing



Your home is your most valuable asset ... Trust the leading name in the **basement waterproofing** industry ... **Basement Technologies, Inc.**

Dirt crawl spaces are common in many homes and present unique problems for the homeowner. Dirt inside the home transmits humidity, odors and radon gas. It also provides rodents and insects an easy path into the upper living portions of the home. The humidity and dampness that is inherent in crawl spaces can also cause structural damage to the wood framing, carpets, floors and walls. This environment is a breeding ground for mold and mildew, all of which present a real problem.

Floor Grate



Installed on the inside of the bulkhead and garage doors. Designed to catch and divert water from the exterior of the bulkhead or driveway and route it to the interior sub-floor system. The design insures water will not get on the floor inside the basement or garage.

"Trust your home to the leading name in the basement waterproofing industry ... **Basement Technologies, Inc.**"

Water Grabber Bull Dog™



High Volume Sump Pumps

Basement Technologies is proud to introduce our revolutionary new **Water Grabber – the “Bull Dog™”**! Our unique patent pending sump pump system represents an innovative alternative to the **basement waterproofing** industry. **Basement Technologies’** research and development department continues to “think outside the box” or in this case “Inside the Box” and as a result...the new **Water Grabber “Bull Dog™”**

Water Grabber Ranger™



Over the years **Basement Technologies, Inc.**, has recognized an unforeseen potential problem...a plumbing pipe burst or leak. Our **waterproofing systems** will solve any ground water problem – but what about a broken plumbing pipe? Our **Water Grabbers®** come with a sealed lid so gas and bugs do not get out, and kids cannot get in.

Stallion Eliminator



An accepted reality in **basement waterproofing** is that all reliable basement waterproofing systems are based on a pumping unit. Pumping units are run on electricity and are a mechanical device prone to possible failure. **Basement Technologies** recommends Battery Backup Units and secondary pumps on all pump locations. *The Stallion Eliminator* is designed to be the best Battery Backup Unit on the market. Storms, power outages and unforeseen mechanical failure are all unforeseen realities. We recommend every **Basement Technologies** customer plan for the unforeseen.

PONI™ Battery Backup System



"Trust your home to the leading name in the basement waterproofing industry . . .
Basement Technologies"

A sub floor **basement waterproofing system** linked to a sump pump is considered by industry experts to be the most reliable and cost effective solution to basement water problems.

Basement Technologies Water Trek Aqua Route® patented system is considered the "best" waterproofing system available today.

Consider the consequences of a power outage and a mechanical failure at the pump, it is highly recommended that homeowners install backups to confront any emergency situation.

Bubbler Pot™



Our unique **Bubbler Pot™** with a drywell of stone underneath the **Bubbler Pot™** is used to discharge the water from the [Water Grabber® Bull Dog™](#) and the patented [Water Trek Aqua Route®](#) system - away from the home. Installed in the yard and flush with the grass on the lawn so you can mow right over it. It is colored green to match your lawn. An excellent solution to a tough problem and predicament.

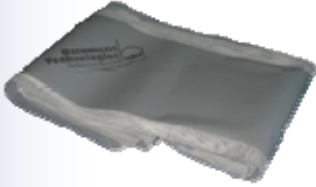
Freeze Stop™



"Rest Easy" it's Patented for a Reason ...It Works Better – Guaranteed.

The heart of any waterproofing system is the sump pump. The sump pump usually discharges the water to the outside of the home. When it gets cold, exterior discharge lines can easily freeze. The pump will continue to pump, but due to the frozen discharge line, the water could back up and cause your basement to flood.

Techni-Crack™



Basement Technologies recognizes that to be a leader in the basement waterproofing industry one must continue to offer new products and improve old ones.

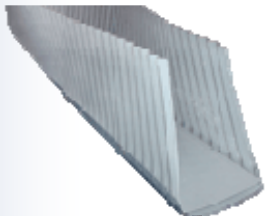
Basement Technologies has been a pioneer in using polyurethane and epoxy injections. Though this method is a good one, our research and development department has introduced a superior product and method. We proudly present **Techni-Crack™** ... a hydrophobic membrane process for a poured foundation wall seepage solution.

The Alternator™



The Alternator™ is another reason why **Basement Technologies, Inc.** dominates the Basement Waterproofing industry. We designed this product with the homeowner's needs in mind ... because our only business is your "dry basement".

Curtain Drain™



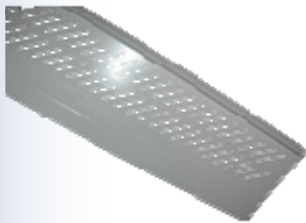
Our patent pending solution to flooding surface water by the home. It is common for homes, at the base of hills or inclines, to have water pooling at the base of the house's foundation. These pools occur during heavy rain falls when water has no where to go. It then penetrates into the basement by seeping under the siding and plywood and over the foundation. **Basement Technologies'** patent pending product, the "**Curtain Drain™**" is designed to eliminate water from entering the basement due to exterior pooling. The "**Curtain Drain™**" will take the threatening water which collected on the surface and route it to the side of the home away from the flooded area. Due to the extreme unpredictability of exterior environments., we cannot warranty exterior system.

Lawn Magnum™



A problem which has been plaguing homeowners and waterproofing companies for years has now been solved. Water collecting on lawns of homes having water proofing systems with sump pumps is very common. The water which enters and then threatens the floor on the inside is drained through our **Water Trek Aqua Route** conduit and is collected in our **Water Grabber Bull Dog** Pump System. The water is then pumped from the basement out onto the lawn through our **Bubbler Pot**. Once, expelled, this water creates another problem for the homeowner.

Gutter Tamer™



Even with a basement waterproofing system installed, excess overflow water entering the basement will cause the system to overwork itself. **Basement Technologies** has always recommended that water from the roof be diverted away from the foundation. Downspout extensions are commonly used in conjunction with many of our cost effective basement waterproofing solutions.

The Gutter Tamer™ is specifically designed and engineered to prevent pine needles, leaves and other debris from getting caught in your gutters. The patent pending cross design of the slats allow the pine needles and leaves to slide over your gutter clear and free from debris.

[Read more... \[Gutter Tamer™\]](#)

Flood Chek Hoses



Basement Technologies realizes that homeowners have many other things to think about besides washing machine hoses. That is why **Basement Technologies** is the leading name in the basement waterproofing industry ...we think outside the box.

Traditional washing machine hoses may seem strong, but hot water can cause rubber to become brittle and fail. A failure (at an average of 70 lbs of pressure) can discharge up to 650 gallons of water per hour. These failures are not at all uncommon; according to State Farm Insurance, they cause about \$170 million in damage to homes in the US & Canada each year.

Humid-Evac



Basement Technologies recognizes that to be the leader in the **basement waterproofing** industry we must design and introduce new products to address new and old problems. **Basement Technologies'** Research and Development department has utilized a revolutionary concept in **basement waterproofing** technology and proudly introduces the **Humid-Evac™** to our customers

Bon Aire



BONAIR By Humidex. *A BREATH OF FRESH AIR! REDUCE HUMIDITY, CREATE A HEALTHY HOME. SOLUTION*

An easy, efficient way to reduce the effect of damaging and uncomfortable humidity in your home. It creates a dynamic air exchange that expels humid indoor air, resulting in a comfortable, dry, healthy living environment.

Tank Pro



Hot water heater tanks can "let go" ever 5 - 10 years and when this happens, the water damage can be devastating. The entire basement gets flooded, ruining all your contents and possessions. Basement Technologies continually strives to eliminate potential water problems in the basement. In doing so, Basement Technologies has developed the **Tank Pro**, a hot water tank protector that will stop this damage from occurring by routing the escaping water from the tank and channeling it to your perimeter [Water Trek Aqua Route](#) system and [Water Grabber Bull Dog](#).

Air Mop® 2



Basement Dehumidifiers

Basement Technologies, Inc. presents products and **waterproofing solutions** to improve your quality of living....

The Basement Technologies, Inc. Air Mop® 2 Heavy Duty Industrial/Marine Basement Dehumidifier, is a no-nonsense, portable dehumidifier at home in hostile industrial, marine or subterranean environments. It is ideal for eliminating damp musty air from your basement. It is also ideal for finished or unfinished areas, insuring a dry basement environment. You can rely on this durable unit to perform faithfully without complicated maintenance or costly downtime. *Just set it and forget it!*

Rain Recycler™

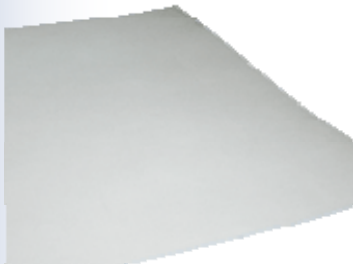


Basement Technologies continues to “Think Outside The Box” ... another reason why we are the leading name in the **basement waterproofing** industry.

Recycle your rain or ground water with the innovative **Rain Recycler™** from **Basement Technologies**....Leader in design innovations for the **basement waterproofing** industry.

The Water Grabber® pumps the water normally discharged to your lawn, to a holding tank. The water is no longer wasted by pumping it out to the lawn, while it is raining. We saved it for the spring and summer months for watering the lawn. Watering ban restrictions and high water bills are common during the summer months. The storage of previously wasted water solves these problems.

Finish White™



Waterproofing Basement Walls

Thinking about finishing your basement? **Finish and waterproofing your walls in one easy step.**

The Finish White™ panel system makes your basement look like a finished room, and waterproofs at the same time. The huge expense of complete remodeling is eliminated. Now you can add a significant amount of living area to your home for a fraction of the cost.

[Read more... \[Finish White™\]](#)

Hot Floor™



Concrete Floor Waterproofing

Your house is your most valuable asset ... so make the most of it with a **Basement Technologies, Inc. Hot Floor™**.

The Hot Floor™ is a specially insulated padded barrier installed on top of your concrete basement floor and under the plywood and carpet. It is unique because it actually gives you the warmth and comfortable feeling of a hot floor similar to the top floor of your home. Headroom height and loss is kept to ¾ to 1", as opposed to the more costly alternatives that cause as much as 4½ to 5" loss of headroom.

The Tech Deck™



"Trust your home to the leading name in the basement waterproofing industry ... **Basement Technologies**"

Moisture on the floor created by condensation becomes a concern of the past. **The Tech Deck™** interlocking floor system is made of a hardened plastic that covers unsightly concrete basement floors giving a beautiful finishing touch. Walls can be installed right on top of the innovative decking.

Lally Wrap™



Trust your home to the leading name in the basement waterproofing industry . . .
Basement Technologies, Inc.

Lally Wrap™ is a patented product that was designed to cover any hard pole type object for safety or cosmetic purposes. It's inherent quality is to quickly and effortlessly convert a hard steel pole or wood pole with corners into a **SAFE, SOFT** and **ATTRACTIVE** design that would then have a padded surface with a leather-like plastic skin. The tough and durable high gloss white skin that will clean easily and maintain its attractive appearance while protecting the specially designed internal heavy duty, burst resistant nylon bubble air cushion.



The Light



"**The Light**" Basement Window is a high quality, durable window that is easy to install, operate, and maintain. Designed specifically for basements, the "**The Light**" Basement Window has many new standard features found only on this unit. **Basement Technologies** proudly introduces the basement window for a new century of construction with **Basement Technologies**.